

TechBriefs

Savannah River National Laboratory

U.S. DEPARTMENT OF ENERGY • SAVANNAH RIVER SITE • AIKEN • SC

srnl.doe.gov

At a glance

- > Reduces systems downtime
- > Cost effective
- > Reduces waste volumes
- > Protects surfaces
- > Reduces personnel exposure
- > Ability to customize size
- > Easily removable
- > Proven results
- > UK No. 245899 patent issued
- > U. S. patent applied for

Contact Information

Savannah River National Laboratory
E-mail: partnerships@srnl.doe.gov



ProTec Tearoffs™ protective barriers

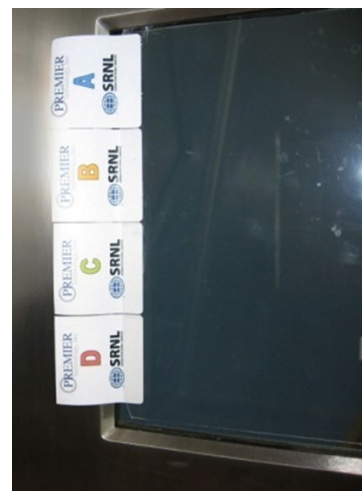
Researchers at the Savannah River National Laboratory (SRNL) have developed a multi-layered tear off system to serve as a protective barrier applicable to areas that require visual access that ultimately becomes distorted due to accidental scratching, spills/splashes of acids or sludge or radiation damage.

Background

The current mitigation technique used in shielded cells is to place a rigid, monolithic sheet of Lexan in front of the glass window as a protective barrier. Over time, visual clarity of the Lexan deteriorates (due to accidental scratching with the manipulators, spills/splatters, or radiation damage) resulting in the replacement of the Lexan sheet. Similar degradation occurs on glovebox or hood sash windows where complete replacement of the window is typically required to regain visual clarity. Replacement requires bulk waste disposal which can be time-consuming and costly.

How it works

The ProTec Tearoffs™ system is the use of thin, multi-layered sheets of Mylar which are applied to serve as a “secondary” (or primary) barrier. Upon degradation of visual clarity due to accidental scratching, spills/splatters, and/or acid/radiation damage, the outer single sheet of Mylar is to be removed “refreshing” or restoring the view. The removal of the outer layer not only regains visual clarity but also provides the “next layer” of protection” due to the multi-layers concept. Potential uses include but are not limited to fumehoods, shielded cell windows, glovebox windows, radiochemical hood sash windows, chemical hood sash windows, and any surface that warrants protection against acid, base, radiation, or physical damage.



Savannah River National Laboratory®

TechBriefs

Savannah River National Laboratory

Technology transfer

The Savannah River National Laboratory (SRNL) is the U.S. Department of Energy's (DOE) applied research and development laboratory at the Savannah River Site (SRS).

With its wide spectrum and expertise in areas such as homeland security, hydrogen technology, materials, sensors, and environmental science, SRNL's cutting edge technology delivers high dividends to its customers.

The management and operating contractor for SRNL is Battelle Savannah River Alliance, LLC. BSRA is responsible for transferring its technologies to the private sector so that these technologies may have the collateral benefit of enhancing U.S. economic competitiveness.

Partnering opportunities

SRNL invites interested companies with proven capabilities in this area of expertise to develop commercial applications for this process or product under a cooperative research and development agreement or licensing agreement. Interested companies will be requested to submit a business plan setting forth company qualifications, strategies, activities, and milestones for commercializing this invention. Qualifications should include past experience at bringing similar products to market, reasonable schedule for product launch, sufficient manufacturing capacity, established distribution networks, and evidence of sufficient financial resources for product development and launch.

SRNL-L7100-2013-00167



Savannah River National Laboratory®